

ANSYS COMPANY PROFILE

OVERVIEW

Ansys Limited is a JSE-altX listed, ISO9001 accredited, Black Empowered, CIDB listed high technology company whose strength, much like South Africa's, lies in its diversity.

Established in 1987, Ansys specialises in a broad range of advanced technology systems, products and services in the following economic segments:

- Rail:
Complex rail signalling, train cab control and communication systems and trackside measurement
- Mining:
Mobile and Continuous Rope Testing equipment and rail network controls
- Industrial:
Process measurement, Automated Maintenance Management Services and thermal imaging
- Defence:
Thermal and visual surveillance/sighting imaging systems for air, land and sea applications, weapon system integration

The company's focus within these diverse high-tech segments is stated in its logo:

'We make it work'.

Ansys achieves competitive advantage through:

- Engineering Excellence
 - Systematic, innovative engineering with in-house, stable intellectual and technological expertise
 - Strong entrepreneurial resources
- The Application of Disruptive Technology
 - Upsetting the status-quo through innovative designs and technology which are more cost effective with equal or superior efficiency
- Market Competitiveness
 - Applying diverse and flexible technology within a focused range of electronics, software and photonics products
- Opportunistic Applications
 - Diversity and flexibility to match the size of the company and the predominantly thin size of markets within the technological segment
- A Competitive Edge within the South African Market through effective BEE compliance
- Co-Operative Relationships rather than Competitive Rivalry
- Easily forming Compatible Alliances
 - Striving to be the best in the high tech field or seeking and combining with the best in the world to deliver excellence of product in a field
- Closeness to the Client

- Hearing what they want, looking for best fit solutions and operating as engineering partners, making it work!

Living this culture and implementing these strategic imperatives is underlain by:

- Passion and the highest integrity throughout the company in all that we do
- Conforming to legal and regulatory directives
- Strong Corporate Governance

A BRIEF HISTORY

Ansys was founded in 1987 to supply the defence force with avionic computers, data logging (black boxes) and other applications of embedded software.

During the late 1980s and early 1990s, the company became the National Centre of Excellence for airborne crash recorders.

This established a broad capability to gather data in extremely harsh environments, process it, and supply it as crucial management information. Its in-house capabilities also allowed the company to complete complex weapons system integration projects. This expertise ensured that Ansys remained responsible to Denel for a variety of weapons integration work for the SANDF.

Active participation in the rail market began in 1998 with the commissioning of an Automatic Vehicle Identification System (VIS) for Transnet Freight Rail on the Coal Link line between Ermelo and Richards Bay. This system was later expanded to allow for Train Condition Monitoring (TCM). In 2003 a similar Vehicle Identification System was installed by Ansys on the Sishen-Saldana OREX line. The successful implementation and support delivered to these major links resulted in the awarding of the Transnet Freight Rail contract to Ansys for the installation of a Vehicle Identification System on all its South African tracks in 2006.

Ansys became black empowered in 2002 through the acquisition of a 40% equity stake in the company and representation on the Ansys Board.

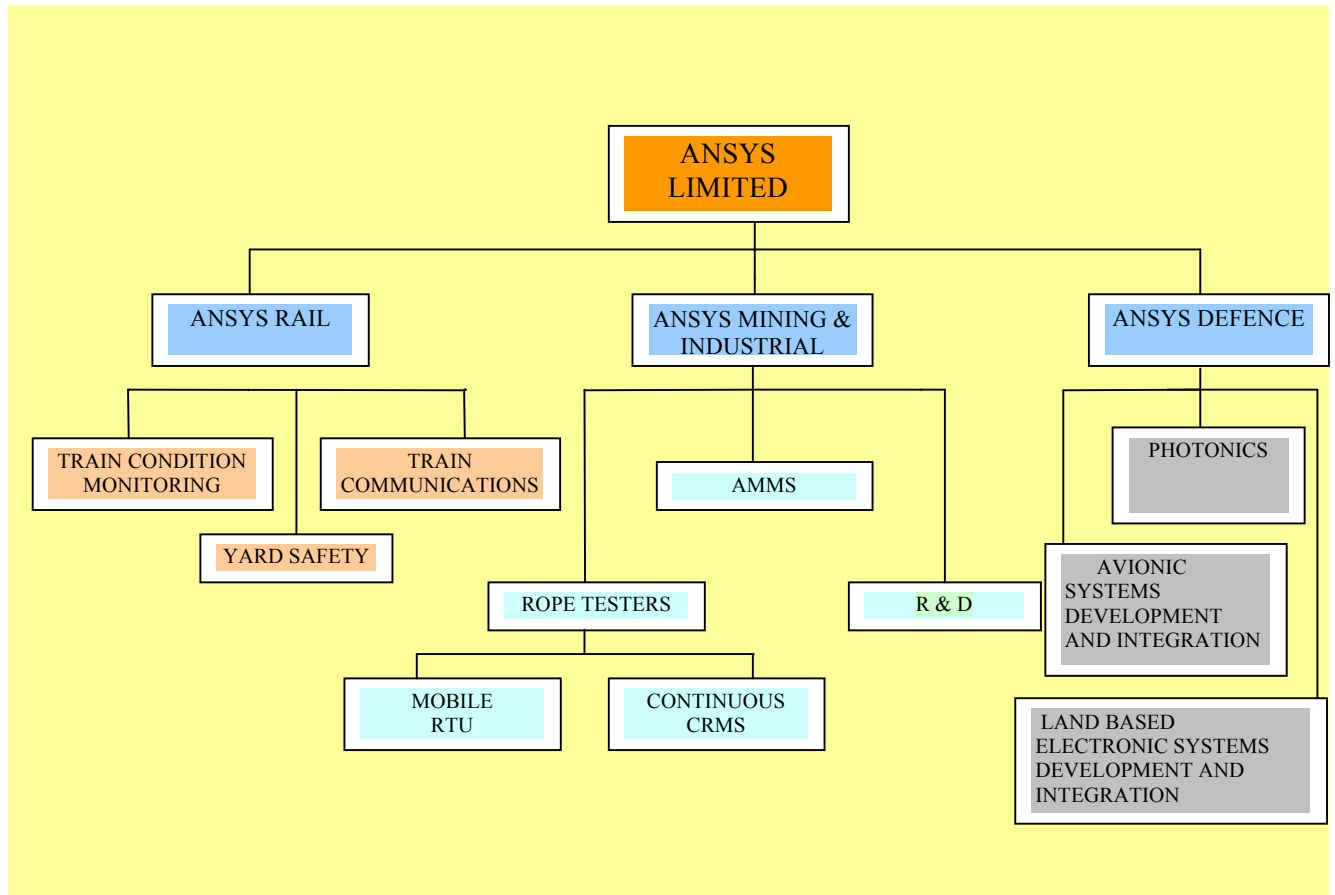
In 2006, Ansys and Invensys Rail Systems Australia agreed to work together to enable Invensys signalling systems to return to South Africa. This positioned both companies favourably for the upgrading of signalling infrastructure in most sub-Saharan African countries.

Ansys listed on the JSEs Alternative Exchange in June 2007 and was the listing of the year in 2007.

Today Ansys dominates the local rail market in Trackside Measurement encompassing health/condition monitoring systems and automatic vehicle identification systems and is one of four nationally approved rail signalling contractors. Its industrial division is involved in monitoring and control systems and information systems for optimisation of business processes and Ansys defence division specialises in the integration of weapon systems on aircraft, land vehicles and ships.

ANSYS' STRUCTURE

Ansys Limited comprises three trading divisions, namely Ansys Rail, Ansys Mining/Industrial and Ansys Defence, each with its own number of product sets. This structure is illustrated in the figure below:



STRATEGIC PARTNERSHIPS

Invensys Rail Systems Australia

Invensys Rail, with whom Ansys Rail has a strategic partnership, is the leading railway signalling, train control engineering company in the Asia Pacific region. Their reputation spans 140 years and they are recognised as Australia's largest manufacturer and supplier of railway signalling and control equipment. Their specialist expertise lies in providing turnkey solutions incorporating Integrated Control & Communication Systems and railway signalling and control.

Invensys Rail Systems Australia forms part of the global Invensys Rail Group, consisting of four regionally based businesses located in Australia, Spain, the United Kingdom and the United States of America. They have 25 global locations and employ over 3 000 people.

Further information about their products, services and capabilities can be obtained by visiting www.invensysrail.com

Original Equipment Manufacturers (OEM)

Ansys seeks strategic partnerships with customers and suppliers in order to offer its customer's the most cost effective solutions. Ansys increasingly supplies equipment components to OEMs, allowing them to remain focused on their business and markets, whilst Ansys as a strategic development partner provides its OEM customers with core skills, solutions and products they need to service their customers. Companies who fall into this category are:

- Invensys Rail Systems Australia
- VEIC Technologies, China
- MRX Technologies, Australia
- Transcore Inc, USA

ANSYS PRODUCTS

Ansys' wide range of products may be summarised as follows:

ANSYS RAIL

Integrated Train Conditioning Monitoring System (ITCMS)

- Location and RFID identification
- Train health monitoring
- Hazardous condition reporting / monitoring
- Incident and accident analysis
- Trending
- Preventative maintenance
- Overall profitability improvement

Trackside Measurement/Yard Safety

- Automatic Vehicle Identification AVI – RFID Tags
- Hot Bearing Detection – HBD – up to 240 km/h with 2 % accuracy
- Acoustic Detection System (Interfacing)
- Load Profile Monitoring Systems – LPMS
- Wheel Profile Monitoring System – 14 cameras and lasers – 0.3 mm accurate @ 25 km/h

Train Communications

- GSM Train Communication Systems
- Train Cab Systems (TCS)
 - Secure voice communication to Train Control Officers (TCOs)
 - Speed alarms / profile
 - Track profiles
 - Location based reporting / alarms
 - Asset tracking
 - Fault reporting
- Phone Dispatcher Terminal System (PDT)
 - TCO see train on map / voice call

- Back Office (BOF)
System database / routes all communications / software updates / trip replay / history backup

ANSYS MINING

- Mobile Rope Testing Units (RTUs)
New improved state of the art electronics
Digital displays
Calibration laboratory
New Mobile Heads
- Continuous Rope Monitoring System (CRMS)
Safety enhancement
Production optimisation
Rope lifespan improvement
Sensitivity enhancement - Temporal Conditioning Monitoring
- Ansys Maintenance Management Service (AMMS)
Paperless operation
Interface to any maintenance software
Traceability
Accountability
Rapid re-deployment of maintenance technicians
Ensuring maintenance technicians are at the right sight every time
- Research and Development

ANSYS DEFENCE

Sights (Photonics)

- High Performance Gunner Sight for the Hoefyster programme
- LCS 100 Sighting System
 - Day /Night, all weather fighting capability
 - Various caliber firing tables
 - High first shot hit probability
 - Low cost
 - Easy installation / operation

Although sights are Ansys' predominant defence product Ansys Defence also has experience and capacity in the following fields:

Avionics and Communications

- Electronics for Helmet mounted sight (3MCU) for the Gripen Fighter
- Launcher Electronics Unit (LEU) for the Mokopa missile launcher
- Rocket Launcher System (RLS) for the Rooivalk
- Grip Multiplexer Unit (GMU) for the Rooivalk
- Air to Air Missile Electronic Unit (AEU) for the Mistral missile launcher

- LAN Interface Unit (LIFU) for GBADS
- SPLOOM for GBADS fibre optic line

Simulators and Consoles

- Mirage F1 Simulator Upgrade
- Fire Unit Trainer (FUT) - GBADS
- Mokopa Missile Simulator – Communication data bus on Rooivalk
- Mil Std 1760 simulator – 1760 communication bus emulation
- Submarine Weapons Console – SAN

Test Equipment

- Rooivalk Harmonisation Kit
- Rooivalk Weapons Test Bench
- SAL 29 Tester – Test equipment for Rooivalk pylon actuator controller
- HMDEU Test Bench – Gripen fighter – for Helmet Mounted Display Electronic Unit

CLIENT LIST

Ansys' client list has increased substantially over the years and includes Transnet Freight Rail, PRASA, Transnet Rail Engineering and GE South African Technologies, Denel Dynamics, Carl Zeiss Optronics, Saab (Sweden), Norinco (China), Aselsan (Turkey), Assmang, Exxaro, Sasol, Kumba, Anglo Platinum, Anglo Field Services, Anglo Gold Ashanti, Tracker and SA Mint amongst others.